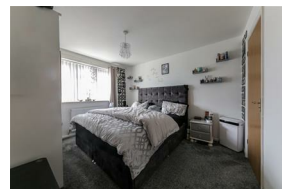




Alexander Hudson Estates

Sales Particulars

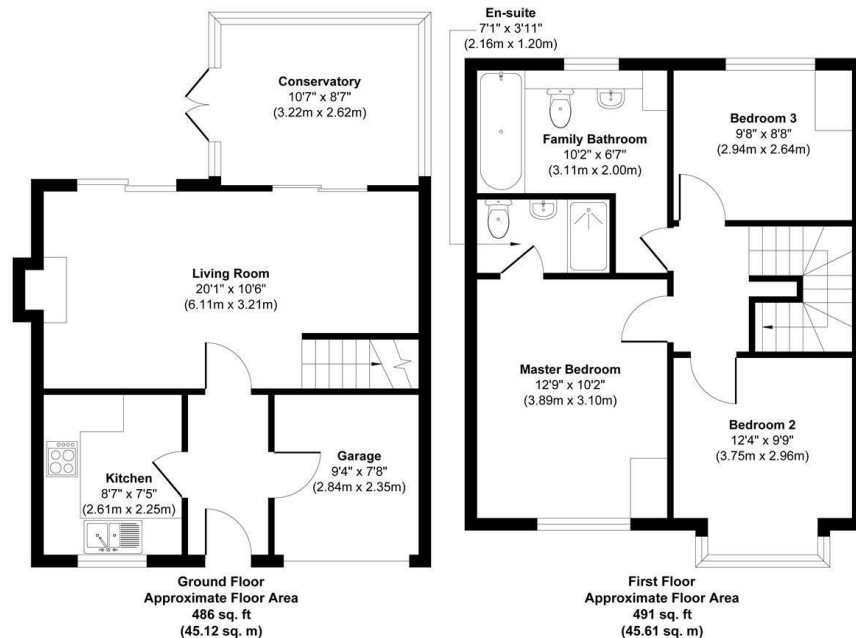


The Property

Alexander Hudson Estates are pleased to welcome to the market this attractive three bedroom semi detached home, well positioned on a residential development in Shiremoor. NE27

The property offers accommodation which briefly comprises; Entrance to Hallway. Generous open lounge dining room incorporating stairs to the first floor and French doors to the conservatory. Fitted kitchen including integrated appliances. To the first floor there are two double bedrooms, the principal bedroom enjoying ensuite shower room/wc. Third single bedroom and family Bathroom/wc. Externally; The property is approached via a driveway leading to a single garage. There are gardens to front and enclosed lawned gardens with decking to the rear.

Perfectly positioned, the home is within walking distance of local schools and excellent transport links, including Shiremoor and Northumberland Park Metro Stations, providing easy access to Newcastle City Centre and the coast at Whitley Bay. Nearby, Northumberland Park shopping complex offers a variety of amenities, including a Sainsbury's, eateries, and a GP surgery.



Approx. Gross Internal Floor Area 977 sq. ft / 90.73 sq. m(Including Garage)

Illustration for identification purpose only, measurements approximate and not to scale, unauthorized reproduction is prohibited. All rights reserved for Alexander Hudson Estates

Freehold
Council Tax: B
EPC Rating: 71





Alexander Hudson Estates
The Printworks
20 Arrow Close
NE12 6QN

0191 268 7433
sales@alexanderhudson.co.uk